



YAHTING
shoes factory



TABLE OF CONTENTS

10

FOOTWEAR FOR ENGINEERS AND TECHNICAL PERSONNEL

20

SLIP-RESISTANT FOOTWEAR

22

SHOES

30

COMBAT BOOTS

36

ANKLE BOOTS

42

LEATHER SANDALS

44

WHITE FOOTWEAR SERIES

46

BOOTS

60

FOOTWEAR FOR HIGH-TEMPERATURE PROTECTION

68

VALENKI FELT BOOTS



www.airfoto.cheb.ru

Dear partners!

In 2017, Yahting Footwear Factory celebrated its 25th anniversary. Currently, Yahting is one of the leading footwear factories in the Russian Federation having a fully-fledged production of protective and safety footwear.

We do not buy semi-finished footwear from India, China, or Vietnam, preferring to carry out all processes from design to packaging in one territory. This allows us to respond attentively to our customer requests, make prompt changes based on customer requirements, and manufacture our products accurately and on time as there is no long supply chain implying deliveries from Asia.

Sticking to innovation, we constantly implement new equipment and solutions, which enables us to offer you new products with new features: in 2018, we planned to start mass production of a new type of injection-molded sole which is slip-resistant on fatty and icy surfaces. We are purchasing new equipment for the manufacture of the outer sole layer from TPU and nitrile rubber featuring three different densities, as well as physical and mechanical properties, which will provide the sole tread with different properties necessary in its contact with various surfaces.

We have started manufacturing some new footwear models made of innovative breathable microfiber cloth, as well as light models made of special fabrics featuring improved vapor permeability, lightness, moisture and oil resistance.

We are developing for your sake, dear friends!

Product certification

GOST 12.4.137-2001	Safety footwear for protection from chemical hazards (oil and oil products), for men and women, including cold-weather footwear: boots, including short shaft boots; shoes, including combat boots; ankle boots.
GOST 12.4.187-97	Safety footwear for protection from general industrial pollution for men and women, including cold-weather footwear: boots, including short shaft boots; shoes, including combat boots; ankle boots.
GOST 12.4.032-95	Safety footwear for protection from high temperatures for men, made of heat-resistant Russian leather, with a heat-resistant rubber sole attached by press vulcanization: boots, including short shaft boots; shoes, including combat boots.
GOST 28507-99	Safety footwear for protection from mechanical impact (an impact of 200 J in the forefoot – with inner protective metal toe caps), for men and women, including cold-weather footwear: boots, including short shaft boots; shoes, including combat boots; ankle boots. Safety footwear for protection from mechanical impact (protection from puncture – with metal puncture-resistant liners), for men and women, including cold-weather footwear: boots, including short shaft boots; shoes, including combat boots; ankle boots.
TU 8830-001-13102141-2012 with Amendment No. 1	Safety footwear for men and women with a combined upper made of leather and felt or leather and felt with a coating protecting from low temperatures, oil, oil products, and general industrial pollution: VALENKI felt boots, BURKI boots.
GOST 28507-99 GOST 12.4.137-2001 GOST 12.4.032-95	Safety footwear for men and women, designs 459, 459B, 5A, with a leather upper or a combined upper made of leather and artificial leather for protection from chemical hazards (oil, oil products), mechanical impact (shock, puncture) with inner protective polycarbonate toe caps with a resistance to shocks of 200 J, and puncture-resistant liners (insoles) made of aramid fabric (Kevlar), and protection from high temperatures, including footwear insulated with real fur (sheepskin), faux fur on knitted base, or faux fur on knitted base with genuine wool pile on an injection-molded rubber sole attached by press vulcanization or on a sole made of single-layer polyurethane (PU) or double-layer polyurethane (PU/PU), or polyurethane and thermopolyurethane (PU/TPU) attached by injection-molding or slip-lasted injection molding: boots, including short shaft boots; shoes, including combat boots, ankle boots, Serial production, GOST 28507-99 Safety leather footwear for protection from mechanical impact. Specifications; GOST 12.4.137-2001 Safety leather footwear for protection from oil products, oils, acids, alkalis, non-toxic and explosive dust. Specifications; GOST 12.4.032-95 Safety leather footwear for protection from high temperatures. Specifications.
GOST 12.4.033-95	Safety leather footwear for protection from slipping on fatty surfaces.



LABELING OF FOOTWEAR

Designation of protective properties marked on the label

GOST 28507-99	From punctures, cuts From shocks of 200 J in the forefoot	P Toe cap
GOST 12.4.137-2001	From crude oil From petroleum oils and heavy fraction products	FO
GOST R 12.4.187-97 OCCUPATIONAL SAFETY STANDARDS SYSTEM.	From general industrial pollution	P
TU 8830-001-13102141-2012 with Amend. No.1 TO 8810-102-13102141-2014	From temperatures of 40°C and higher	CI
GOST 12.4.032-95	From thermal radiation From sparks, splashes, molten metal, scale From contact with surfaces heated to over 45°C	HI SI HRO
GOST 12.4.033-77	From slipping on fatty surfaces	Anti-slip

Each half of a pair of footwear must have the following marking:

- type of footwear
- model number
- size (metric and/or Paris point system), width
- protective properties in accordance with GOST 12.4.103-83
- regulatory and technical documentation (GOST, TU)
- date of manufacture (month, year)
- name of manufacturer

LABEL EXAMPLE

Conformance to standards

Type of footwear
Model No.

Designation of protective properties

Size

Date of manufacture

Width

EAC TP TC 019/2011
GOST 12.4.137-2001
GOST 12.4.187-97

**Сапоги
мод. 1-03 ПУ-Ч**

Защ. св-ва: Нс Нм 3
Размер: **47** Полнота: **С**
Дата выпуска: **01/2018**

Гарантийный срок – 70 дней
Срок эксплуатации не нормируется

уход и утилизация
согласно НТД

Изготовитель: **ООО «Яхтинг»**
Россия, ЧР, 428003, г.Чебоксары
пр-т Тракторостроителей, 121
info@yahting.biz
тел/факс (8352) 53-88-32

EXPLANATION OF SYMBOLS

	Protection from low temperatures		Protection from general industrial pollution
	Waterproof		Leather upper
	Protection from oil and oil products		Combined material
	Protection from scale		Metal toe cap, polycarbonate toe cap
	Genuine fur		Metal insole, Kevlar insole
	Protection from high temperatures		Protection from electric arc
	Nitrile sole, t + 300°		PU-TPU sole, t +150° polyurethane-thermopolyurethane
	Protection from slipping on fatty surfaces		Protection from slipping on icy surfaces

PHYSICAL AND MECHANICAL INDICATORS

	Unit	Designation			Nitrile rubber	Quality indicators according to EN344	Test method
		PU	PU-PU (outer sole layer)	TPU-PU (outer sole layer)			
Density	kg/m3	0.55	1.07	1.18	1.176	normal	DIN 53620
Hardness, in 15 sec	Shore A	55	62	65	65	normal	DIN 53505
Abrasion resistance (10 N load), not more than	weight loss in mg	85	65	60	-----	not more than 150	DIN 53516
Bend strength, at + 23°C	Number of bends (not less than)	100,000	100,000	100,000	-----	not less than 30,000	DIN 53563
Bend strength, at -35°C	Number of bends (not less than)	-----	30,000	30,000	-----	not less than 30,000	DIN 53563
Bend strength, at -25°C	Number of bends (not less than)	30,000	-----	-----	-----	not less than 30,000	DIN 53563

Foot personal protective equipment (foot PPE) – safety footwear

Recommended use of foot PPE and information on safe application:

- use footwear in accordance with the declared protective properties marked on it, its certificate of conformity and current season of the year;
- avoid cuts on the footwear upper and sole as this may affect its performance;
- footwear should be chosen based on the size taking into account individual foot features; when trying on footwear, you should not feel any discomfort, and your foot must not be compressed;
- to prevent sole separation, do not take off your footwear stepping on its back;
- after work, clean your footwear removing the dirt and dry it open in a ventilated room at a distance of at least 50 cm from heating devices for ventilation and drying;
- do not use any organic solvents to clean your footwear;
- footwear must be disposed of in accordance with the rules established in the regulatory documentation.

Manufacturer's guarantee:

- provided the actual use and storage conditions comply with the declared protective properties, as well as declared transport and storage conditions
- warranty lifespan – 70 days from the date of receipt;
 - the service life of foot PPE is not standardized by the manufacturer, and it depends on whether the user follows the requirements specified in the regulatory and technical documentation during use, transportation, and storage;
 - warranty shelf life for products stored in undamaged packages in the warehouse in accordance with the handling and storage conditions – 12 from the date of sale.

DIMENSIONS

The footwear size is determined by some basic parameters such as the width (volume) of the inner part of footwear and the length of the insole.

There are two shoe-size systems:

1. the Paris point system: the Paris point – the old French unit of measurement – serves as a unit of length of the insole equal to 2/3 cm, or 6.67 mm.
2. the metric system – 1 mm or 1 cm serves as a unit of length.

APPROXIMATE CORRESPONDENCE OF SHOE SIZES OF DIFFERENT SYSTEMS

FOR WOMEN		22,5	23	23,5	24,5	25	25,5	26	26,5	27	27,5			
Metric system														
Paris point system		35	36	37	38	39	40	40,5	41	42	43			
FOR MEN		25	25,5	26	26,5	27	27,5	28	28,5	29	29,5	30	30,5	31
Metric system														
Paris point system		39	40	40,5	41	42	43	43,5	44	45	46	46,5	47	48

TYPES OF SOLES AND SOLE ATTACHING METHODS

POLYURETHANE NITRILE RUBBER

Sole options:

1. Last design 459. It is possible to use the following combinations:

PU-TPU, PU-R. Size range: 36-47.

POLYURETHANE + THERMOPOLYURETHANE

Sole options:

1. Last design 459. It is possible to use the following combinations:

PU-TPU, PU-R. Size range: 36-47.

DOUBLE-LAYER POLYURETHANE

All footwear models with a double-layer sole are made by direct injection molding of polyurethane onto the upper work piece.

Sole options:

1. Last design 459 PU-PU. Size range: 35-47.

2. Alpha – Last design 563. Lightweight double-layer sole (recommended for sandals and ankle boots). Size range: 36-46.

3. Last design Esjot PU-PU (recommended for boots, shoes). Size range: 40-47.

SINGLE-LAYER POLYURETHANE

The sole is made of a porous material featuring a high mechanical strength and low weight.

Sole options:

1. LIM – Last design 5A. LIM sole footwear is made of single-layer polyurethane forming the sole and the heel area. Size range: 39-40.

2. PU Fir – Last design 563. Lightweight single-layer sole (recommended for sandals and ankle boots). Size range: 35-46.

3. Last design 459 PU. Size range: 36-47.

4. Last design 563 PU. Size range: 36-40.

5. Last design Esjot PU. Size range: 40-47.

PRESS VULCANIZATION OF RUBBER

A sole made from nitrile rubber by direct flow molding followed by vulcanization is resistant to high temperatures (up to + 300°C/60 sec), as well as low temperatures (-50°C min.), and it features wear- and slip-resistance.

Sole options:

Rubber 1. last design 5A. Size range: 40-47

2. last design 459B. Size range: 38-46

3. last design 459A, Paver.

Size range: 40-46

VARIOUS SOLE OPTIONS ARE AVAILABLE



PU-CH Alpha – double-layer polyurethane

Size range: 36-40



PU LIM – single-layer polyurethane

Size range: 40-47



R – press vulcanization of nitrile rubber

Size range: 38-48



R – press vulcanization of rubber

Size range: 35-48



A – press vulcanization of nitrile rubber Paver

Size range: 39-47

TYPES OF SOLES AND SOLE ATTACHING METHODS

SLIP-RESISTANT:



PU-Rubber



PU-Rubber

Size range: 35-48



PU-Rubber



PU-PU – double-layer polyurethane
PU-TPU – polyurethane-thermopolyurethane
PU-R – polyurethane-nitrile

Size range: 40-47



459 PU-PU – double-layer polyurethane
PU-TPU – polyurethane-thermopolyurethane
PU-R – polyurethane-nitrile

Size range: 35-47



459 PU-PU – double-layer polyurethane
PU-TPU – polyurethane-thermopolyurethane
PU-R – polyurethane-nitrile

Size range: 40-47



FOOTWEAR FOR ENGINEERS AND TECHNICAL PERSONNEL

The practical design makes it possible to wear such footwear not only at work, but also in everyday life. High-quality materials prevent discomfort and rubbing. The upper is made of durable natural materials. The sole is made of polyurethane being antistatic, as well as oil and gasoline resistant.

The following materials can be used:

Footwear upper: Russian leather, chrome, nubuck.
Lining: fleece, faux fur, wool fabric, real fur.
Toe cap: thermoplastic (5 J), steel, polycarbonate (200 J).

The following materials can be used:

Footwear upper: chrome, nubuck.
Lining: Tipika fabric, mesh, velour, faux fur, wool fabric, real fur.
Toe cap: thermoplastic (5 J), steel, polycarbonate (200 J).
Puncture-resistant insole: steel, Kevlar (1200 N).



Sole: 459

PU-PU – double-layer polyurethane
PU-TPU – polyurethane-thermopolyurethane
PU-R – polyurethane-nitrile



Models:

M 373
M 375

GOSTs: 12.4.137-2001, 12.4.187-97, 28507-99
Size range: 38-47





Sole: 459

PU-PU – double-layer polyurethane
PU-TPU – polyurethane-thermopolyurethane
PU-R – polyurethane-nitrile



Models:

1-002 – Russian leather

GOSTs: 12.4.137-2001, 12.4.187-97, 28507-99

Size range: 35-47



Sole:

459 PU-CH – single-layer polyurethane



Models:

M 272 PU-CH 459 – CHROME

GOSTs: 12.4.137-2001, 12.4.187-97, 28507-99

Size range: 35-47



Sole: 459

PU-PU – double-layer polyurethane
PU-TPU – polyurethane-thermopolyurethane
PU-R – polyurethane-nitrile



Models:

5-008 – Russian leather

GOSTs: 12.4.137-2001, 12.4.187-97, 28507-99

Size range: 35-47



Sole:

459 PU-CH – single-layer polyurethane

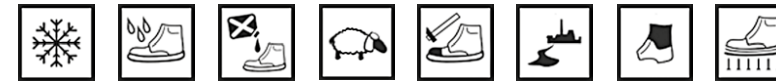


Models:

M 280 PU-CH 459 – velour

GOSTs: 12.4.137-2001, 12.4.187-97, 28507-99

Size range: 35-47





Sole: 459
 PU-PU – double-layer polyurethane
 PU-TPU – polyurethane-thermopolyurethane
 PU-R – polyurethane-nitrile



Models:
 5-004

GOSTs: 12.4.137-2001, 12.4.187-97, 28507-99
Size range: 35-47

The following materials can be used:

Footwear upper: Russian leather, chrome, microfiber cloth.
 Lining: Tipika fabric, mesh, velour.
 Toe cap: thermoplastic (5 J), steel, polycarbonate (200 J).
 Puncture-resistant insole: steel, Kevlar (1200 N).



Sole: 459
 PU-PU – double-layer polyurethane
 PU-TPU – polyurethane-thermopolyurethane
 PU-R – polyurethane-nitrile



Models:
 5-002 B – Russian leather

GOSTs: 12.4.137-2001, 12.4.187-97, 28507-99
Size range: 35-47



Sole: 459
 PU-PU – double-layer polyurethane
 PU-TPU – polyurethane-thermopolyurethane
 PU-R – polyurethane-nitrile



Models:
 5-003 – Russian leather, chrome, microfiber cloth

GOSTs: 12.4.137-2001, 12.4.187-97, 28507-99
Size range: 35-47





Sole:
459 PU-CH – single-layer polyurethane



Models:
4-22 PU-CH 459 – Russian leather, chrome

GOSTs: 12.4.137-2001, 12.4.187-97, 28507-99
Size range: 35-47



Sole: 459
PU-PU – double-layer polyurethane
PU-TPU – polyurethane-thermopolyurethane
PU-R – polyurethane-nitrile



Models:
5-502 – Russian leather

GOSTs: 12.4.137-2001, 12.4.187-97, 28507-99
Size range: 35-47



Sole:
PU-PU – double-layer polyurethane
PU-TPU – polyurethane-thermopolyurethane
PU-R – polyurethane-nitrile



Models:
2-62 – Russian leather

GOSTs: 12.4.137-2001, 12.4.187-97, 28507-99
Size range: 35-47



Models:
M 370 S





Models:
I-004



Models:
I-006



Models:
I-003



Models:
I-005



Models:
I-002



Models:
M 405



Models:
M 405



Models:
M 405



Models:
M 239 PU-R 459



Models:
M 422



PROTECTION FROM SLIPPING ON ICY SURFACES

The following materials can be used:

Footwear upper: Russian leather, chrome, Cordura.
 Lining: Tipika fabric, fleece, faux fur, real fur.
 Shaft: oil and gasoline resistant, cold resistant material Cordura®.
 Multi-layer lining: aluminum foil with biaxially oriented polypropylene, thermal insulation material ZM.
 Thinsulate® B-400 and wool fabric.
 Toe cap: thermoplastic (5 J), steel, polycarbonate (200 J).
 Puncture-resistant insole: steel, Kevlar (1200 N).



GOSTs: 12.4.137-2001, 12.4.187-97, 28507-99
Size range: 35-47



Sole: 459
 PU-PU – double-layer polyurethane
 PU-TPU – polyurethane-thermopolyurethane
 PU-R – polyurethane-nitrile



Models:
 Shoes M 378
Models:
 Boots M 378

PROTECTION FROM SLIPPING ON FATTY SURFACES

The following materials can be used:

Footwear upper: Russian leather, chrome, microfiber cloth.
 Lining: textiles.
 Toe cap: thermoplastic (5 J), steel, polycarbonate (200 J).
 Puncture-resistant insole: steel, Kevlar (1200 N).



GOSTs: 12.4.137-2001, 12.4.187-97, 28507-99
Size range: 35-47



Models:
 1-006



Models:
 4-52



Models:
 2-62



SHOES

Work shoes with soft edging and lacing ensuring tight and comfortable fit. Suitable for work on production sites, outdoors, and indoors. Protect from mechanical impact and general industrial injuries.

The following materials can be used:

- Footwear upper: Russian leather.
- Insulation: faux fur, wool fabric.
- Toe cap: thermoplastic (5 J), steel (200 J).

Sole:

PU-PU – double-layer polyurethane



Sole:

PU-CH – single-layer polyurethane



PU-TPU – polyurethane-thermopolyurethane

Models:

- 1-502 f – Russian leather
- 1-502-3 f – Russian leather, wool fabric
- 1-502-5 f – Russian leather, faux fur
- 1-502-7 f – chrome
- 1-502-8 f – chrome, faux fur

Size range: 35-40

PU-R – polyurethane-nitrile

- 1-502-1 f – Russian leather, metal toe cap
- 1-502-3-1 f – Russian leather, wool fabric, metal toe cap
- 1-502-5-1 f – Russian leather, wool fabric, metal toe cap
- 1-502-7-1 f – chrome, metal toe cap
- 1-502-8-1 f – chrome, wool fabric, metal toe cap

GOSTs: 12.4.137-2001, 12.4.187-97, 28507-99

Models:

- 1-502 PU-CH f – Russian leather
- 1-502-3 PU-CH f – Russian leather, wool fabric
- 1-502-5 PU-CH f – Russian leather, faux fur
- 1-502-7 PU-CH f – chrome
- 1-502-8 PU-CH f – chrome, faux fur

Size range: 35-40

- 1-502-1 PU-CH f – Russian leather, metal toe cap
- 1-502-3-1 PU-CH f – Russian leather, wool fabric, metal toe cap
- 1-502-5-1 PU-CH f – Russian leather, faux fur, metal toe cap
- 1-502-7-1 PU-CH f – chrome, metal toe cap
- 1-502-8-1 PU-CH f – chrome, faux fur, metal toe cap

GOSTs: 12.4.137-2001, 12.4.187-97, 28507-99



Sole:
R - press vulcanization of rubber



Models:
2-32 R - Russian leather
2-33 R - Russian leather, wool fabric
2-35 R - Russian leather, faux fur
2-36 R - Russian leather, real fur

2-321 R - Russian leather, metal toe cap
2-331 R - Russian leather, wool fabric, metal toe cap
2-351 R - Russian leather, faux fur, metal toe cap
2-361 R - Russian leather, real fur, metal toe cap

GOSTs: 12.4.032-95, 28507-99, 12.4.137-2001
Size range: 35-48



Sole:
PU-PU - double-layer polyurethane
PU-TPU - polyurethane-thermopolyurethane
PU-R - polyurethane-nitrile



Models:
2-62 - Russian leather
2-63 - Russian leather, wool fabric
2-65 - Russian leather, faux fur
2-66 - Russian leather, real fur

2-621 - Russian leather, metal toe cap
2-631 - Russian leather, wool fabric, metal toe cap
2-651 - Russian leather, faux fur, metal toe cap
2-661 - Russian leather, real fur, metal toe cap

GOSTs: 12.4.137-2001, 12.4.187-97, 28507-99
Size range: 40-47



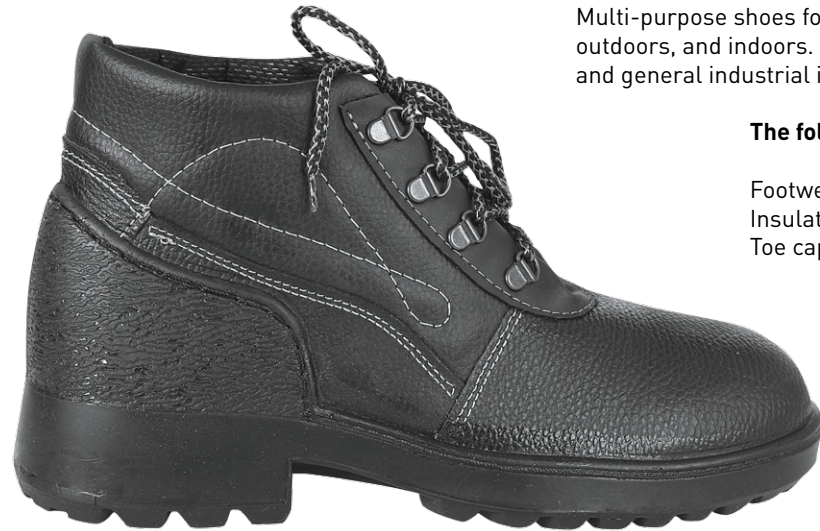


SHOES

Multi-purpose shoes for work on production sites, outdoors, and indoors. Protect from mechanical impact and general industrial injuries.

The following materials can be used:

Footwear upper: Russian leather.
Insulation: faux fur, wool fabric.
Toe cap: thermoplastic (5 J), steel (200 J).



Sole:

PU-PU – double-layer polyurethane



PU-TPU – polyurethane-thermopolyurethane

Models:

2-12 – Russian leather
2-13 – Russian leather, wool fabric
2-15 – Russian leather, faux fur
2-16 – Russian leather, real fur

Size range: 40-47

PU-R – polyurethane-nitrile

2-121 – Russian leather, metal toe cap
2-131 – Russian leather, wool fabric, metal toe cap
2-151 – Russian leather, faux fur, metal toe cap
2-161 – Russian leather, real fur, metal toe cap

GOSTs: 12.4.137-2001, 12.4.187-97, 28507-99



Sole:

PU LIM – single-layer polyurethane



Models:

2-12 LIM – Russian leather
2-15 LIM – Russian leather, faux fur
2-121 LIM – Russian leather, metal toe cap
2-151 LIM – Russian leather, faux fur, metal toe cap

Size range: 39-47

GOSTs: 12.4.137-2001, 12.4.187-97, 28507-99

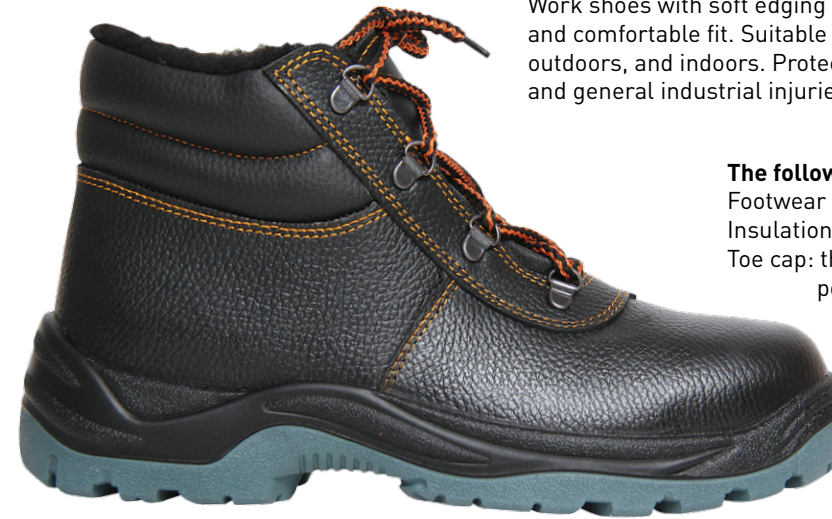


SHOES

Work shoes with soft edging and lacing ensuring tight and comfortable fit. Suitable for work on production sites, outdoors, and indoors. Protect from mechanical impact and general industrial injuries.

The following materials can be used:

Footwear upper: Russian leather.
Insulation: faux fur, wool fabric, real fur.
Toe cap: thermoplastic (5 J), steel, polycarbonate (200 J).



Sole: 459

PU-PU – double-layer polyurethane



PU-TPU – polyurethane-thermopolyurethane

Models:

1-001 – Russian leather
1-003 – Russian leather, wool fabric
1-005 – Russian leather, faux fur
1-006 – Russian leather, real fur
1-001-1 – Russian leather, metal toe cap
1-003-1 – Russian leather, wool fabric, metal toe cap
1-005-1 – Russian leather, faux fur, metal toe cap
1-006-1 – Russian leather, real fur, metal toe cap

GOSTs: 12.4.137-2001
12.4.187-97
28507-99
Size range: 35-47



Sole:

459 PU-CH – single-layer polyurethane



Models:

1-001 PU-CH 459 – Russian leather
1-003 PU-CH 459 – Russian leather, wool fabric
1-005 PU-CH 459 – Russian leather, faux fur
1-006 PU-CH 459 – Russian leather, real fur
1-001-1 PU-CH 459 – Russian leather, metal toe cap
1-003-1 PU-CH 459 – Russian leather, wool fabric, metal toe cap
1-005-1 PU-CH 459 – Russian leather, faux fur, metal toe cap
1-006-1 PU-CH 459 – Russian leather, real fur, metal toe cap

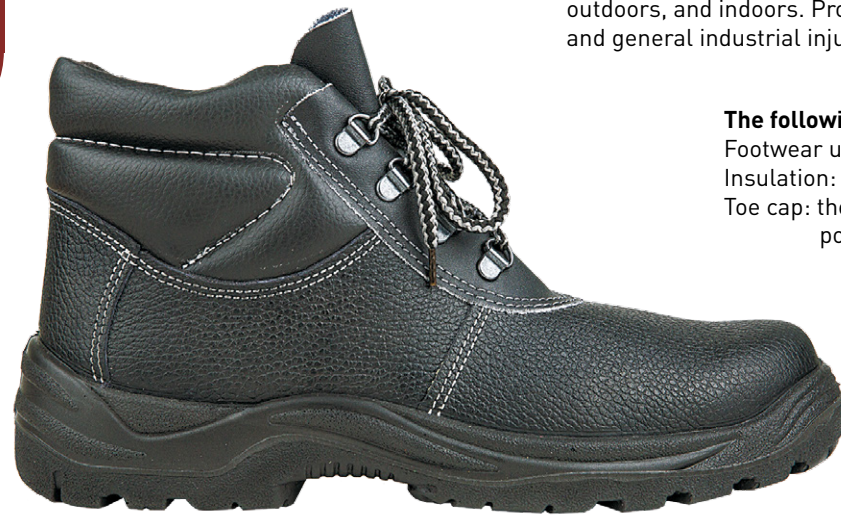
GOSTs: 12.4.137-2001,
12.4.187-97,
28507-99
Size range: 35-47





SHOES

Multi-purpose boots for work on production sites, outdoors, and indoors. Protect from mechanical impact and general industrial injuries.



The following materials can be used:
Footwear upper: Russian leather.
Insulation: faux fur, wool fabric, real fur.
Toe cap: thermoplastic (5 J), steel, polycarbonate (200 J).

BEST SELLER

Sole: 459

PU-PU – double-layer polyurethane

PU-TPU – polyurethane-thermopolyurethane

PU-R – polyurethane-nitrile



Models:

- 22-42 – Russian leather
- 22-43 – Russian leather, wool fabric
- 22-45 – Russian leather, faux fur
- 22-46 – Russian leather, real fur
- 22-42-1 – Russian leather, metal toe cap
- 22-43-1 – Russian leather, wool fabric, metal toe cap
- 22-45-1 – Russian leather, faux fur, metal toe cap
- 22-46-1 – Russian leather, faux fur, metal toe cap

GOSTs: 12.4.137-2001, 12.4.187-97, 28507-99
Size range: 33-47



Sole:

459 PU-CH – single-layer polyurethane



Models:

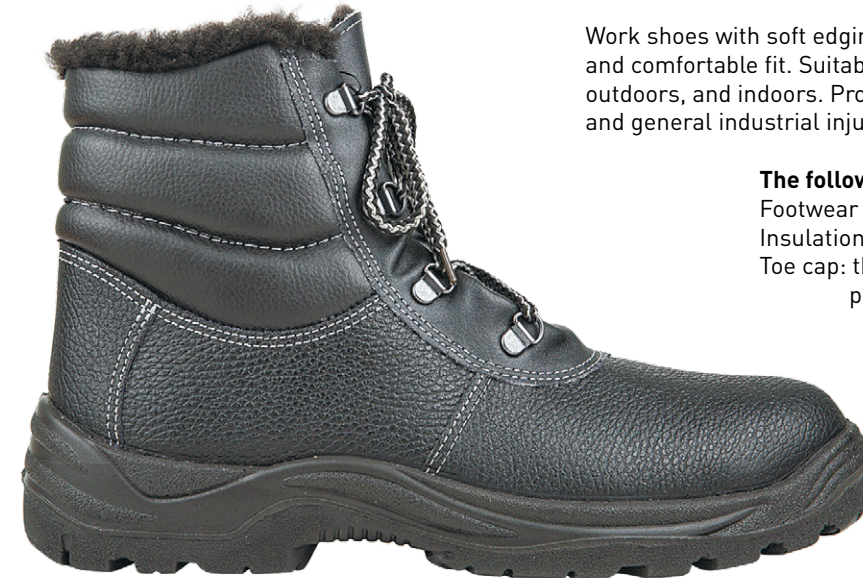
- 22-42 459 CH – Russian leather
- 22-43 459 CH – Russian leather, wool fabric
- 22-45 459 CH – Russian leather, faux fur
- 22-42-1 459 CH – Russian leather, metal toe cap
- 22-43-1 459 CH – Russian leather, wool fabric, metal toe cap
- 22-45-1 459 CH – Russian leather, faux fur, metal toe cap

GOSTs: 12.4.137-2001, 12.4.187-97, 28507-99
Size range: 33-47



SHOES

Work shoes with soft edging and lacing ensuring tight and comfortable fit. Suitable for work on production sites, outdoors, and indoors. Protect from mechanical impact and general industrial injuries.



The following materials can be used:
Footwear upper: Russian leather.
Insulation: faux fur, wool fabric.
Toe cap: thermoplastic (5 J), steel, polycarbonate (200 J).



Sole: 459

PU-PU – double-layer polyurethane

PU-TPU – polyurethane-thermopolyurethane

PU-R – polyurethane-nitrile



Models:

- 22-55 – Russian leather, faux fur
- 22-55-1 – Russian leather, faux fur, metal toe cap

GOSTs: 12.4.137-2001, 12.4.187-97, 28507-99
Size range: 35-47



Sole:

459 PU-CH – single-layer polyurethane



Models:

- 22-55 PU-CH 459 – Russian leather, faux fur
- 22-55-1 PU-CH 459 – Russian leather, faux fur, metal toe cap

GOSTs: 12.4.137-2001, 12.4.187-97, 28507-99
Size range: 35-47





COMBAT BOOTS

Combat boots are recommended for employees of security companies, and they are also suitable for other types of production and protect from general industrial pollution. These boots are suitable for everyday wear.

The bellows tongue prevents the penetration of foreign objects, the soft edging ensures tight fit on the leg and protects it from rubbing, and the hard back secures the heel. The «envelope» structure (with lapped quarters) enables people with different bridges of the foot to use these boots.

The following materials can be used:

Footwear upper: Russian leather, chrome.

Lining: Tipika fabric, faux fur, real fur, fleece, wool fabric.

Toe cap: thermoplastic (5 J), steel, polycarbonate (200 J).

The outer sole layer is gray; upon customers' request, their corporate color can be used.



BEST SELLER



OMON BOOTS

Multi-purpose combat boots protect from general industrial pollution and are suitable for everyday wear. The lightweight polyurethane sole ensures comfort at work. The bellows tongue prevents the penetration of foreign objects, the soft edging ensures tight fit on the leg and protects it from rubbing, and the hard back secures the heel.

The following materials can be used:

Footwear upper: Russian leather, chrome.

Lining: Tipika fabric.

Insulation: faux fur, wool fabric, real fur.

Toe cap: thermoplastic (5 J), steel, polycarbonate (200 J).

Sole: 459

PU-PU – double-layer polyurethane



PU-TPU – polyurethane-thermopolyurethane

Models:

- 3-22 – Russian leather
- 3-23 – Russian leather, wool fabric
- 3-25 – Russian leather, faux fur
- 3-26 – Russian leather, real fur
- 3-27 – chrome
- 3-28 – chrome, faux fur
- 3-29 – chrome, real fur

Size range: 35-47



PU-R – polyurethane-nitrile

- 3-021 – Russian leather, metal toe cap
- 3-031 – Russian leather, wool fabric, metal toe cap
- 3-051 – Russian leather, faux fur, metal toe cap
- 3-061 – Russian leather, real fur, metal toe cap
- 3-071 – chrome, metal toe cap
- 3-081 – chrome, faux fur, metal toe cap
- 3-091 – chrome, real fur, metal toe cap

GOSTs: 12.4.137-2001, 12.4.187-97, 28507-99

Sole:

459 PU-CH – single-layer polyurethane



Models:

- 3-22 PU-CH 459 – Russian leather
- 3-23 PU-CH 459 – Russian leather, wool fabric
- 3-25 PU-CH 459 – Russian leather, faux fur
- 3-26 PU-CH 459 – Russian leather, real fur
- 3-27 PU-CH 459 – chrome
- 3-28 PU-CH 459 – chrome, faux fur
- 3-29 PU-CH 459 – chrome, real fur

Size range: 35-47



- 3-021 PU-CH 459 – Russian leather, metal toe cap
- 3-031 PU-CH 459 – Russian leather, wool fabric, metal toe cap
- 3-051 PU-CH 459 – Russian leather, faux fur, metal toe cap
- 3-061 PU-CH 459 – Russian leather, real fur, metal toe cap
- 3-071 PU-CH 459 – chrome, metal toe cap
- 3-081 PU-CH 459 – chrome, faux fur, metal toe cap
- 3-091 PU-CH 459 – chrome, real fur, metal toe cap

GOSTs: 12.4.137-2001, 12.4.187-97, 28507-99

Sole:

R – press vulcanization of rubber



Models:

- 3-22 R – Russian leather
- 3-23 R – Russian leather, wool fabric
- 3-25 R – Russian leather, faux fur
- 3-26 R – Russian leather, real fur

Size range: 35-48



- 3-021 R – Russian leather, metal toe cap
- 3-031 R – Russian leather, wool fabric, metal toe cap
- 3-051 R – Russian leather, faux fur, metal toe cap
- 3-061 R – Russian leather, real fur, metal toe cap

GOSTs: 12.4.137-2001, 12.4.187-97, 28507-99



BEST SELLER



OMON BOOTS

Multi-purpose combat boots protect from general industrial pollution and are suitable for everyday wear. The lightweight polyurethane sole ensures comfort at work. The bellows tongue prevents the penetration of foreign objects, the soft edging ensures tight fit on the leg and protects it from rubbing, and the hard back secures the heel.

The following materials can be used:

Footwear upper: Russian leather, chrome.

Insulation: faux fur, wool fabric, real fur.

Toe cap: thermoplastic (5 J), steel, polycarbonate (200 J).

Sole:

PU-PU – double-layer polyurethane



PU-TPU – polyurethane-thermopolyurethane

Models:

- 3-02 – Russian leather
- 3-03 – Russian leather, wool fabric
- 3-05 – Russian leather, faux fur
- 3-06 – Russian leather, real fur
- 3-07 – chrome
- 3-08 – chrome, faux fur
- 3-09 – chrome, real fur

Size range: 40-47

PU-R – polyurethane-nitrile

- 3-021 – Russian leather, metal toe cap
- 3-031 – Russian leather, wool fabric, metal toe cap
- 3-051 – Russian leather, faux fur, metal toe cap
- 3-061 – Russian leather, real fur, metal toe cap
- 3-071 – chrome, metal toe cap
- 3-081 – chrome, faux fur, metal toe cap
- 3-091 – chrome, real fur, metal toe cap

GOSTs: 12.4.137-2001, 12.4.187-97, 28507-99

Sole:

PU-CH – single-layer polyurethane



Models:

- 3-02 PU-CH – Russian leather
- 3-03 PU-CH – Russian leather, wool fabric
- 3-05 PU-CH – Russian leather, faux fur
- 3-021 PU-CH – Russian leather, metal toe cap
- 3-031 PU-CH – Russian leather, wool fabric, metal toe cap
- 3-051 PU-CH – Russian leather, faux fur, metal toe cap

Size range: 40-47

GOSTs: 12.4.137-2001, 12.4.187-97, 28507-99



Sole:

PU LIM – single-layer polyurethane



Models:

- 3-02 LIM – Russian leather
- 3-03 LIM – Russian leather, wool fabric
- 3-05 LIM – Russian leather, faux fur
- 3-021 LIM – Russian leather, metal toe cap
- 3-031 LIM – Russian leather, wool fabric, metal toe cap
- 3-051 LIM – Russian leather, faux fur, metal toe cap

Size range: 39-47

GOSTs: 12.4.137-2001, 12.4.187-97, 28507-99



Sole:

PU-PU – double-layer polyurethane



PU-TPU – polyurethane-thermopolyurethane

PU-R – polyurethane-nitrile

Models:

- 3-02 f – Russian leather
- 3-03 f – Russian leather, wool fabric
- 3-05 f – Russian leather, faux fur
- 3-06 f – Russian leather, real fur
- 3-021 f – Russian leather, metal toe cap
- 3-031 f – Russian leather, wool fabric, metal toe cap
- 3-051 f – Russian leather, faux fur, metal toe cap
- 3-061 f – Russian leather, real fur, metal toe cap

Size range: 36-40

GOSTs: 12.4.137-2001, 12.4.187-97, 28507-99





ANKLE BOOTS

Made of genuine leather, they have a soft edging and are complemented with natural material lining; these ankle boots are to be used in heated rooms and during warm seasons, and they are also suitable for engineers and technical personnel.



The following materials can be used:

Footwear upper: Russian leather, chrome.

Lining: split leather, Tipika fabric.

Toe cap: thermoplastic (5 J), steel, polycarbonate (200 J).



Sole: 459

PU-PU – double-layer polyurethane

PU-TPU – polyurethane-thermopolyurethane

PU-R – polyurethane-nitrile



Models:

- 5-001 B – Russian leather
- 5-001-1 B – Russian leather, metal toe cap

GOSTs: 12.4.137-2001, 12.4.187-97, 28507-99
Size range: 35-47



Sole:

459 PU-CH – single-layer polyurethane



Models:

- 5-001 B PU-CH 459 – Russian leather
- 5-001-1 B PU-CH 459 – Russian leather, metal toe cap

GOSTs: 12.4.137-2001, 12.4.187-97, 28507-99
Size range: 35-47





Sole: 459

PU-PU – double density polyurethane
PU-TPU – polyurethane-thermo-polyurethane
PU-R – polyurethane-nitrile



Models:

5-001 – Russian leather
5-001-1 – Russian leather, metal toe cap

GOSTs: 12.4.137-2001, 12.4.187-97, 28507-99
Size range: 35-47



Sole:

PU-CH Alfa – single density polyurethane



Models:

M 238 PU-CH Alfa – Russian leather/chrome

GOSTs: 12.4.137-2001, 12.4.187-97
Size range: 40-46

Sole: 459

PU-PU – double density polyurethane
PU-TPU – polyurethane-thermo-polyurethane
PU-R – polyurethane-nitrile

PU-CH – single density polyurethane



Models:

M 320 – Russian leather
M 320-1 – Russian leather, metal toe cap

M 320 PU-CH – Russian leather
M 320-1 PU-CH – Russian leather, metal toe cap

GOSTs: 12.4.137-2001, 12.4.187-97, 28507-99
Size range: 35-47



Sole:

PU-PU – double density polyurethane
PU-TPU – polyurethane-thermo-polyurethane
PU-R – polyurethane-nitrile



Models:

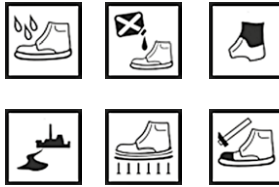
25-02 f – Russian leather
25-07 f – chrome

25-021 f – Russian leather, metal toe cap
25-071 f – chrome, metal toe cap

GOSTs: 12.4.137-2001, 12.4.187-97, 28507-99
Size range: 40-47



BEST SELLER



ANKLE BOOTS

Made of genuine leather, they have a soft edging and are complemented with natural material lining; these ankle boots are to be used in heated rooms and during warm seasons, and they are also suitable for engineers and technical personnel.

The following material can be used:
Upper – Russian leather, chrome

Lining – split leather, Tipika fabric.
Toe cap – thermoplastic (5 J), steel (200 J).

Sole:
PU-PU – double density polyurethane



PU-TPU – polyurethane-thermo-polyurethane PU-R – polyurethane-nitrile

Models:
5-02 PU-PU f – Russian leather 5-021 PU-PU f – Russian leather, metal toe cap
5-07 PU-PU f – chrome 5-071 PU-PU f – chrome, metal toe cap

Size range: 36-40 **GOSTs:** 12.4.137-2001, 12.4.187-97, 28507-99

Sole:
PU-CH f – single density polyurethane



Models:
5-02 PU-CH f – Russian leather
5-021 PU-CH f – Russian leather, metal toe cap

Size range: 36-40 **GOSTs:** 12.4.137-2001, 12.4.187-97, 28507-99



Sole:
PU-PU Alfa – double density polyurethane PU-TPU Alfa – polyurethane-thermo-polyurethane PU-R Alfa – polyurethane-nitrile



Models:
5-02 – Russian leather 5-021 – Russian leather, metal toe cap
5-07 – chrome 5-071 – chrome, metal toe cap

Size range: 40-46 **GOSTs:** 12.4.137-2001, 12.4.187-97, 28507-99



Sole:
PU-CH Alfa – single density polyurethane



Models:
5-02 PU-CH Alfa – Russian leather
5-021 PU-CH Alfa – Russian leather, metal toe cap

Size range: 40-46 **GOSTs:** 12.4.137-2001, 12.4.187-97, 28507-99



Sole:
PU Fir – single density polyurethane, style 563



Models:
5-02 PU Fir – Russian leather 5-021 PU Fir – Russian leather, metal toe cap
5-07 PU Fir – chrome 5-071 PU Fir – chrome, metal toe cap

Size range: 35-46 **GOSTs:** 12.4.137-2001, 12.4.187-97, 28507-99





LEATHER SANDALS

The design of the sandals' upper protects the foot from external influences. Due to the existing open areas on the vamps and quarters, as well as due to a soft edging along the upper edge of the quarters, good air exchange is ensured, the sandals are comfortable and rational. The insole has an anatomical shape.



The following materials can be used:

Upper – Russian leather, chrome.
 Lining – split leather or Tipika fabric.
 Toe cap – thermoplastic (5 J), steel, polycarbonate (200 J).

The color of the running layer of the sole-gray, in agreement with the customer can be replaced by a corporate color.



Sole: 459

PU-PU – double density polyurethane



PU-TPU – polyurethane-thermo-polyurethane

PU-R – polyurethane-nitrile

Models:

M 196 – Russian leather
 M 196-1 – Russian leather, metal toe cap

GOSTs: 12.4.137-2001, 12.4.187-97, 28507-99

Size range: 35-47

Sole:

459 PU-CH – single density polyurethane



Models:

M 196 PU-CH 459 – Russian leather
 M 196-1 PU-CH 459 – Russian leather, metal toe cap

GOSTs: 12.4.137-2001, 12.4.187-97, 28507-99

Size range: 35-47



WHITE FOOTWEAR SERIES

White footwear is made by direct molding of polyurethane onto the upper work piece. The upper of the footwear can be made of: breathable microfiber cloth, which can be washed; genuine leather with PU coating. Polyurethane sole is resistant to oil and gasoline, as well as to climatic influence. Polyurethane has damping properties, buffers the impact loads, as well as makes the footwear light and comfortable.

Sole:
459 PU – single density polyurethane
PU-TPU – polyurethane-thermo-polyurethane



Models:
4-52 A PU 459

GOSTs: 12.4.137-2001, 12.4.187-97, 28507-99
Size range: 35-47



Sole:
459 PU – single density polyurethane
PU-TPU – polyurethane-thermo-polyurethane



Models:
2-62 A PU 459

GOSTs: 12.4.137-2001, 12.4.187-97, 28507-99
Size range: 40-46



Sole:
459 PU – single density polyurethane
PU-TPU – polyurethane-thermo-polyurethane



Models:
4-22 A PU 459

GOSTs: 12.4.137-2001, 12.4.187-97, 28507-99
Size range: 35-47





BOOTS

Boots can be used in various industries, including:

- refining ventures;
- food production facilities;
- companies, manufacturing household cleaning products.

Such footwear is useful for people who in force of professional duties have contact with alkali, oil, petroleum and low temperatures. Boots protect feet against hazardous substance exposure and mechanical injuries.

The following materials can be used:

Vamp – Russian leather.

Shaft – tarpaulin, Russian leather.

Insulation: faux fur, real fur, fleece, wool fabric

Toe cap – thermoplastic (5 J), steel, polycarbonate (200 J).



BEST SELLER

LEATHER SHORT SHAFT BOOTS

The footwear is made of double density polyurethane by injection molded shoe construction method. Footwear upper material is heat-resistant water repellent leather (Russian leather) 1.8–2.0 mm thick. Extensive last of special design makes it possible to work all day without feeling uncomfortable and tired. Additional protection against side and back shocks.

Special collar, protecting against mud penetration, comfortable last of anatomic shape. Boot straps for comfort putting on.

Sole: 459

PU-PU – double density polyurethane



PU-TPU – polyurethane-thermo-polyurethane

PU-R – polyurethane-nitrile

Models:

- 1-92 – Russian leather
- 1-93 – Russian leather, wool fabric
- 1-94 – Russian leather-tarpaulin, faux fur
- 1-95 – Russian leather, faux fur
- 1-96 – Russian leather, real fur

Size range: 35-47

- 1-921 – Russian leather, metal toe cap
- 1-931 – Russian leather, wool fabric, metal toe cap
- 1-941 – Russian leather-tarpaulin, faux fur, metal toe cap
- 1-951 – Russian leather, faux fur, metal toe cap
- 1-961 – Russian leather, real fur, metal toe cap

GOSTs: 12.4.137-2001, 12.4.187-97, 28507-99



Sole:

R – press vulcanization of rubber



Models:

- 1-92 R – Russian leather/chrome
- 1-93 R – Russian leather, wool fabric
- 1-95 R – Russian leather, faux fur
- 1-96 R – Russian leather, real fur

Size range: 35-48

- 1-921 R – Russian leather/chrome, metal toe cap
- 1-931 R – Russian leather, wool fabric, metal toe cap
- 1-951 R – Russian leather, faux fur, metal toe cap
- 1-961 R – Russian leather, real fur, metal toe cap

GOSTs: 12.4.032-95, 28507-99, 12.4.137-2001





28 cm

Sole:
PU-PU – double density polyurethane
PU-TPU – polyurethane-thermo-polyurethane
PU-P – polyurethane-nitrile



- Models:**
 1-01 – Russian leather-tarpaulin
 1-02 – Russian leather
 1-03 – Russian leather, wool fabric
 1-04 – Russian leather-tarpaulin, faux fur
 1-05 – Russian leather, faux fur
 1-06 – Russian leather, real fur
- 1-011 – Russian leather-tarpaulin, metal toe cap
 1-021 – Russian leather, metal toe cap
 1-031 – Russian leather, wool fabric, metal toe cap
 1-041 – Russian leather-tarpaulin, faux fur, metal toe cap
 1-051 – Russian leather, faux fur, metal toe cap
 1-061 – Russian leather, real fur, metal toe cap

GOSTs: 12.4.137-2001, 12.4.187-97, 28507-99
Size range: 40-47



Sole: 459
PU-PU – double density polyurethane



PU-TPU – polyurethane-thermo-polyurethane PU-R – polyurethane-nitrile

- Models:**
 1-01 – Russian leather-tarpaulin
 1-02 – Russian leather
 1-03 – Russian leather, wool fabric
 1-04 – Russian leather-tarpaulin, faux fur
 1-05 – Russian leather, faux fur
 1-06 – Russian leather, real fur
- 1-011 – Russian leather-tarpaulin, metal toe cap
 1-021 – Russian leather, metal toe cap
 1-031 – Russian leather, wool fabric, metal toe cap
 1-041 – Russian leather-tarpaulin, faux fur, metal toe cap
 1-051 – Russian leather, faux fur, metal toe cap
 1-061 – Russian leather, real fur, metal toe cap

Size range: 35-47

GOSTs: 12.4.137-2001, 12.4.187-97, 28507-99



Sole:
459 PU-CH – single density polyurethane



- Models:**
 1-01 PU-CH 459 – Russian leather-tarpaulin
 1-02 PU-CH 459 – Russian leather
 1-03 PU-CH 459 – Russian leather, wool fabric
 1-04 PU-CH 459 – Russian leather-tarpaulin, faux fur
 1-05 PU-CH 459 – Russian leather, faux fur
 1-06 PU-CH 459 – Russian leather, real fur
- 1-011 PU-CH 459 – Russian leather-tarpaulin, metal toe cap
 1-021 PU-CH 459 – Russian leather, metal toe cap
 1-031 PU-CH 459 – Russian leather, wool fabric, metal toe cap
 1-041 PU-CH 459 – Russian leather-tarpaulin, faux fur, metal toe cap
 1-051 PU-CH 459 – Russian leather, faux fur, metal toe cap
 1-061 PU-CH 459 – Russian leather, real fur, metal toe cap

Size range: 35-47

GOSTs: 12.4.137-2001, 12.4.187-97, 28507-99



Sole:
PU-CH – single density polyurethane



- Models:**
 1-01 PU-CH – Russian leather-tarpaulin
 1-02 PU-CH – Russian leather
 1-03 PU-CH – Russian leather, wool fabric
 1-04 PU-CH – Russian leather-tarpaulin, faux fur
 1-05 PU-CH – Russian leather, faux fur
 1-06 PU-CH – Russian leather, real fur
- 1-011 PU-CH – Russian leather-tarpaulin, metal toe cap
 1-021 PU-CH – Russian leather, metal toe cap
 1-031 PU-CH – Russian leather, wool fabric, metal toe cap
 1-041 PU-CH – Russian leather-tarpaulin, faux fur, metal toe cap
 1-051 PU-CH – Russian leather, faux fur, metal toe cap
 1-061 PU-CH – Russian leather, real fur, metal toe cap

Size range: 40-47

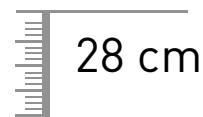
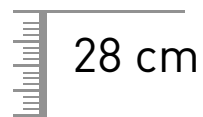
GOSTs: 12.4.137-2001, 12.4.187-97, 28507-99



SHORT SHAFT BOOTS

This model is designed for work in all industries, in particular in construction, transport and agricultural industries. Comfortable last of anatomic shape and insole.

Cutting shaft with adjustable closing makes it possible to tuck trousers into boots and tighten according to shaft thickness.



LEATHER SHORT SHAFT BOOTS

Boots are made by direct molding of polyurethane or rubber onto the upper work piece. Material of footwear upper is genuine leather 1.8-2.0 mm thick. Insulations can be used: faux fur, wool fabric, real fur. Boot straps are used for comfort putting on.

Sole:

R - press vulcanization of rubber



Models:

- 1-721 m.k.R - Russian leather, metal toe cap
- 1-731 m.k. R - Russian leather, wool fabric, metal toe cap
- 1-751 m.k. R - Russian leather, faux fur, metal toe cap
- 1-761 m.k. R - Russian leather, real fur, metal toe cap
- 1-771 m.k. R - chrome, metal toe cap
- 1-781 m.k. R - chrome, faux fur, metal toe cap
- 1-791 m.k. R - chrome, real fur, metal toe cap

Size range: 35-48

GOSTs: 12.4.032-95, 28507-99, 12.4.137-2001

Sole:

PU-PU - double density polyurethane



PU-TPU - polyurethane-thermo-polyurethane

Models:

- 1-72 collar - Russian leather
- 1-72 d collar - Russian leather, backed with Tipika
- 1-73 collar - Russian leather, wool fabric
- 1-75 collar - Russian leather, faux fur

Size range: 40-47

GOSTs: 12.4.137-2001, 12.4.187-97, 28507-99

PU-R - polyurethane-nitrile

- 1-721 collar - Russian leather, metal toe cap
- 1-721 d collar - Russian leather, complemented with Tipika, metal toe cap
- 1-731 collar - Russian leather, wool fabric, metal toe cap
- 1-751 collar - Russian leather, faux fur, metal toe cap



28 cm



SHORT SHAFT BOOTS

The footwear is made of rubber based on nitrile by injection molded sole construction method. Materials of footwear upper are heat-resistant water repellent leather (Russian leather) 1.8–2.0 mm thick, combined Russian leather-tarpaulin.

Extensive last of special design makes it possible to work all day without feeling uncomfortable and tired. The shaft is cutting with the adjustable closing.

Sole:

R - press vulcanization of rubber



Models:

- 1-21 R - Russian leather-tarpaulin
- 1-22 R - Russian leather
- 1-23 R - Russian leather, wool fabric
- 1-24 R - Russian leather-tarpaulin, faux fur
- 1-25 R - Russian leather, faux fur
- 1-26 R - Russian leather, real fur

Size range: 35-48

- 1-211 R - Russian leather-tarpaulin, metal toe cap
- 1-221 R - Russian leather, metal toe cap
- 1-231 R - Russian leather, wool fabric, metal toe cap
- 1-241 R - Russian leather-tarpaulin, faux fur, metal toe cap
- 1-251 R - Russian leather, faux fur, metal toe cap
- 1-261 R - Russian leather, real fur, metal toe cap

GOSTs: 12.4.032-95, 28507-99, 12.4.137-2001



28 cm

"POSTMAN" BOOTS

Distinctive feature of this model is a sole made of thermo elastoplast (TEP); it is very light and cold resistant, has an antiskid system. Shafts with zips are made of genuine leather (Russian leather) - strong, long-wearing and hygienic material. Cement and lock-stitch thread sewn sole construction method. The parts are joined by double stitch.

Insulation: faux, real fur or wool fabric.

Models:

M 317 TEP - Russian leather, wool fabric



GOSTs: 12.4.137-2001, 12.4.187-97

Size range: 35-47





The following materials can be used:

Vamp and quarter – Russian leather
Shaft – oil and gasoline, cold resistant material «Cordura®»
Multilayer lining – aluminum foil with biaxially oriented polypropylene, thermal insulation material ZM, «Thinsulate® B-400» and wool fabric.
Insole – felt.



Sole:

459 PU-PU – double density polyurethane



PU-TPU – polyurethane-thermo-polyurethane
PU-R – polyurethane-nitrile

Models:

6-091 PU-TPU – Russian leather-Cordura

Size range: 35-48

**GOSTs: 12.4.032-95, 28507-99,
12.4.187-97, 12.4.137-2001**

Sole:

R – press vulcanization of rubber



Models:

6-093 P – Russian leather-Cordura, metal toe cap

Size range: 35-48

**GOSTs: 12.4.032-95, 28507-99,
12.4.187-97, 12.4.137-2001**

“NORTH” BOOTS

Leather boots combined with textile material for protection against low temperatures with double density polyurethane sole with the running layer made of thermo-polyurethane or nitrile.



32 cm

Sole:
PU-CH – single density polyurethane



Models:
1-51 PU-CH – Russian leather-tarpaulin
1-52 PU-CH – Russian leather
1-53 PU-CH – Russian leather, wool fabric
1-54 PU-CH – Russian leather-tarpaulin, faux fur
1-55 PU-CH – Russian leather, faux fur
1-56 PU-CH – Russian leather, real fur
1-511 PU-CH – Russian leather-tarpaulin, metal toe cap
1-521 PU-CH – Russian leather, metal toe cap
1-531 PU-CH – Russian leather, wool fabric, metal toe cap
1-541 PU-CH – Russian leather-tarpaulin, faux fur, metal toe cap
1-551 PU-CH – Russian leather, faux fur, metal toe cap
1-561 PU-CH – Russian leather, real fur, metal toe cap

GOSTs: 12.4.137-2001, 12.4.187-97, 28507-99
Size range: 40-47



Sole:
PU-PU – double density polyurethane



Sole: 459
PU-PU – double density polyurethane



Sole:
459 PU-CH – single density polyurethane



PU-TPU – polyurethane-thermo-polyurethane PU-R – polyurethane-nitrile

Models:
1-51 – Russian leather-tarpaulin
1-52 – Russian leather
1-53 – Russian leather, wool fabric
1-54 – Russian leather-tarpaulin, faux fur
1-55 – Russian leather, faux fur
1-56 – Russian leather, real fur
1-511 – Russian leather-tarpaulin, metal toe cap
1-521 – Russian leather, metal toe cap
1-531 – Russian leather, wool fabric, metal toe cap
1-541 – Russian leather-tarpaulin, faux fur, metal toe cap
1-551 – Russian leather, faux fur, metal toe cap
1-561 – Russian leather, real fur, metal toe cap

Size range: 40-47 **GOSTs:** 12.4.137-2001, 12.4.187-97, 28507-99

PU-TPU – polyurethane-thermo-polyurethane PU-R – polyurethane-nitrile

Models:
1-51 – Russian leather-tarpaulin
1-52 – Russian leather
1-53 – Russian leather, wool fabric
1-54 – Russian leather-tarpaulin, faux fur
1-55 – Russian leather, faux fur
1-56 – Russian leather, real fur
1-511 – Russian leather-tarpaulin, metal toe cap
1-521 – Russian leather, metal toe cap
1-531 – Russian leather, wool fabric, metal toe cap
1-541 – Russian leather-tarpaulin, faux fur, metal toe cap
1-551 – Russian leather, faux fur, metal toe cap
1-561 – Russian leather, real fur, metal toe cap

Size range: 35-47 **GOSTs:** 12.4.137-2001, 12.4.187-97, 28507-99

Models:
1-51 PU-CH 459– Russian leather-tarpaulin
1-52 PU-CH 459– Russian leather
1-53 PU-CH 459– Russian leather, wool fabric
1-54 PU-CH 459– Russian leather-tarpaulin, faux fur
1-55 PU-CH 459– Russian leather, faux fur
1-56 PU-CH 459– Russian leather, real fur
1-511 PU-CH 459– Russian leather-tarpaulin, metal toe cap
1-521 PU-CH 459– Russian leather, metal toe cap
1-531 PU-CH 459– Russian leather, wool fabric, metal toe cap
1-541 PU-CH 459– Russian leather-tarpaulin, faux fur, metal toe cap
1-551 PU-CH 459– Russian leather, faux fur, metal toe cap
1-561 PU-CH 459– Russian leather, real fur, metal toe cap

Size range: 35-47 **GOSTs:** 12.4.137-2001, 12.4.187-97, 28507-99

BOOTS

Boots are made by direct molding of polyurethane onto the upper work piece.
Material of footwear upper is genuine leather 1.8-2.0 mm thick or combined Russian leather-tarpaulin.
Shaft is adjusted for thickness by two buckles.

The following materials can be used:

Upper – Russian leather, Russian leather-tarpaulin.
Insulation – faux fur, wool fabric, real fur.
Toe cap – thermoplastic (5 J), steel, polycarbonate (200 J).



FOOTWEAR FOR HIGH-TEMPERATURE PROTECTION

Characteristics of the Nitrile series footwear

- A metal or polycarbonate toe cap is used to protect the forefoot.
- Kevlar insole is used to protect from punctures.
- The footwear is made by the compression-molding method of construction of nitrile based rubber sole, followed by vulcanization of the footwear upper.
- Top material is heat-resistant, water-repellent leather of increased thickness (1.8-2.0 mm)
- Oil and gasoline resistant sole (resistant to aggressive media, such as oils and oil products) is made of wear-resistant, heat-resistant, frost-resistant (-40...+300 in a short-term (60 c) contact with heated surfaces) nitrile based rubber. Nitrile, used for sole molding, is high-elastic and flexible.
- Tread pattern of the outsole provides good adhesion to icy and oily surfaces (the tread depth is 4 mm)
- Natural materials, wide and easy to wear last provide high performance properties of the footwear and protect it from external exposures and high temperatures.
- Nonwoven fabric and shoe polyamide lining.
- Protection From High Temperatures footwear series is recommended for use in industries related to the exposure of the human foot to low and high temperatures, fuels and lubricants.



Models:
8-093 R

BEST SELLER

Models:
2-321 SV R

WELDER BOOTS

Leather shoes with soft edges and internal closed tongue, which prevents various particles to get inside the footwear, and the outer tongue to protect the lacing. The belt provides additional fixation. Footwear is recommended for welding to protect the feet from contact with heated surfaces, when working in hot shops. The temperature range of use is from -50°C to +300°C. The sole has oil and gasoline resistant, acid and alkali resistant properties, metal toe cap protects the toes from mechanical damage (200 J).



Sole:
R - press vulcanization of rubber



Models:
2-321 SV R – Russian leather, metal toe cap
2-331 SV R – Russian leather, wool fabric, metal toe cap
2-351 SV R – Russian leather, faux fur, metal toe cap
2-361 SV R – Russian leather, real fur, metal toe cap

GOSTs: 12.4.032-95, 12.4.187-97, 12.4.137-2001, 28507-99
Size range: 35-48



BURNTHROUGH SHOES for welders



Sole:
R - press vulcanization of rubber



Models:
M 239 R – Russian leather/chrome, metal toe cap

GOSTs: 12.4.032-95, 12.4.187-97,
12.4.137-2001, 28507-99
Size range: 35-48



PAVER BOOTS



Sole:
A R - press vulcanization of nitrile



Models:
12-321 A R – Russian leather, metal toe cap

GOSTs: 12.4.032-95, 12.4.187-97,
12.4.137-2001, 28507-99
Size range: 38-48





BEST SELLER



FOUNDRY MAN BOOTS

Boots are made of genuine leather with elastic cuff and shock resistant inner metal toe cap on heat-resistant nitrile rubber sole with injection molding construction method.

The sole with oil-resistant, oil and gasoline resistant, acid and alkali resistant properties, is resistant to slipping, withstands temperatures from -50°C to +300°C.

The cuff provides fit of the edging, prevents various particles to get inside the footwear, metal toe cap protects the toes from mechanical damage (200 J).

Sole:

R - press vulcanization of rubber



Models: 32 cm

- 1-421 R - Russian leather, metal toe cap
- 1-421 d R - Russian leather, metal toe cap, coated with fleece.
- 1-431 R - Russian leather, wool fabric, metal toe cap
- 1-451 R - Russian leather, faux fur, metal toe cap
- 1-461 R - Russian leather, real fur, metal toe cap

GOSTs: 12.4.032-95, 12.4.187-97, 12.4.137-2001, 28507-99
Size range: 35-48



BEST SELLER



SPECIAL PURPOSE FOOTWEAR FOR ASPHALT PAVING AND ROAD WORKS

The flat outsole leaves no traces on the road surface, withstands high temperatures up to +200°C and provides protection from aggressive media.

The following materials can be used:

The top of the footwear is made of Russian leather. Lining is fleece, felt, Toe cap is made of thermoplastic (5 J), polycarbonate (200 J).

Sole:

A - press vulcanization of nitrile rubber «Paver»



Models:

- 1-721 A R - Russian leather, metal toe cap
- 1-731 A R - Russian leather, wool fabric, metal toe cap
- 1-751 A R - Russian leather, faux fur, metal toe cap
- 1-761 A R - Russian leather, real fur, metal toe cap

GOSTs: 12.4.032-95, 12.4.187-97, 12.4.137-2001, 28507-99
Size range: 40-47



BEST SELLER



Sole:
R - press vulcanization of rubber



Models:
4906 R – Russian leather, metal nose, puncture-resistant insole

**GOSTs 12.4.137-2001, 12.4.187-97, 28507-99,
12.4.032-95, 28507-99**
Size range: 35-48

SAFETY BOOTS

Leather firefighting boots provide protection from adverse and harmful environmental factors arising during fire fighting and accident management, from climatic and mechanical effects. Boots are used in climatic zones with temperatures from -50°C.



The following materials can be used:

The top of the footwear is made of heat-resistant Russian leather.
Toe cap is made of steel (200 J).
Sole is made of wear-resistant heat-resistant rubber.

Protective elements:

- puncture-resistant insole
- metal toe cap

Sole made of wear-resistant and oil and gasoline resistant rubber, kevlar puncture-resistant insole and metal toe cap are used as protective element.

Technical characteristics:

- Protection of feet from temperature of at least 200°C and heat flow of not less than 5 kW/m² for at least 5 minutes;
- Resistance to sole puncture of not less than 1200 N;
- Internal safe gap in the forefoot with the impact energy of (200 +/-5) J, not less than 20 mm;
- Protection against water and aggressive agents;
- Frost resistance up to – 50°C



Sole:
R - press vulcanization of rubber



Models:
1-621-7 R – Russian leather, metal nose, puncture-resistant insole

**GOSTs 12.4.137-2001, 12.4.187-97, 28507-99,
12.4.032-95, 28507-99**
Size range: 35-48



VALENKI FELT BOOTS

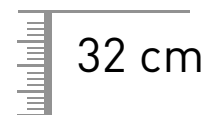
Safety footwear made of felt of smooth-coated or coarse-coated 100% sheep wool and Russian leather, with oil and gasoline resistant sole made of rubber and polyurethane with injection molding construction method, the thermoplastic sole with adhesive and stitching construction method, designed to protect feet from low temperatures, oil products and general industrial pollution.

Material is rubbered felt and genuine leather. The shaft is split, on the outside there is a wedge with an adjustable buckle, which allows you to tuck trousers into boots and tighten boots around calves, which will provide protection from dust and small objects.

They can be used in all climate zones, have retained the best properties of natural shoes, are so popular in our country and provide an good alternative to the felt boots.

Felt boots can be used in various industries, construction, agriculture, storage facilities or utilities. These boots will help you not only to withstand the hard frosts, but also protect you from mechanical damage, and the felt coating allows you to work all winter until the spring thaw.

The polycarbonate toe cap protects the toes from mechanical damage (200 J), and kevlar insole protects feet from punctures.



32 cm

Sole:
459 R - press vulcanization of nitrile rubber



TU 8830-001-13102141-2012 with rev. No.1
Size range: 38-46



Models:

11-91 R – Russian leather, felt
11-91 K R – Russian leather, felt, drawstring



11-911 R – Russian leather, felt, polycarbonate toe cap (200 J)
11-911 K R – Russian leather, felt, drawstring, polycarbonate toe cap (200 J)



Models:

11-93 K R – Russian leather, combined shaft: felt + coated felt, drawstring



11-931 K R – Russian leather, combined shaft: felt + coated felt, drawstring polycarbonate toe cap (200 J)



Models:

11-92 R – Russian leather, felt with 5 mm rubber coating
11-92 To R – Russian leather, felt with 5 mm rubber coating, drawstring



11-921 R – Russian leather, felt with 5 mm rubber coating, drawstring toe cap (200 J)
11-921 K R – Russian leather, felt with 5 mm rubber coating, drawstring, polycarbonate toe cap (200 J)



Models:

11-93 R – Russian leather, combined shaft: felt + coated felt, drawstring



11-931 R – Russian leather, combined shaft: felt + coated felt, drawstring polycarbonate toe cap (200 J)





Models:

11-82 R – Russian leather, felt
11-87 R –chrome, felt

11-82 PU-PU – Russian leather, felt
11-87 PU-PU – chrome, felt

11-82 PU-CH – Russian leather, felt
11-87 PU-CH – chrome, felt



Models:

M 252 R – Russian leather, felt,
M 252-2 R – Russian leather, felt,
polycarbonate toe cap (200 J)





YAHTING EXPORT GROUP

428007, Traktorostroiteley avenue 127. Cheboksary
Russian Federation

Export/import department

tel: +7 8352 538847

+7 8352 538803

fax: +7 8352 538832

mailto: info@yahting.biz
nikita@yahting.biz
maria@yahting.biz

www.safetyfootwear.ru